

ANBUSWAY

XLC-III SERIES

NEXT-GENERATION COMPACT BUSWAY

Zhenjiang Anyi Electrical Co., Ltd.

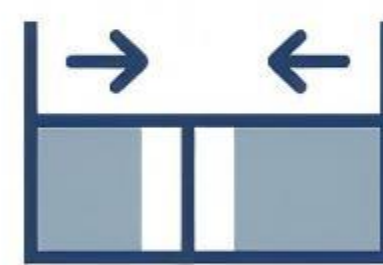
Innovative Structure Powering the New Era of Efficient Distribution

Featuring an innovative dual-chamber cooling design that breaks through conventional technical limits. By optimizing conductor arrangement and heat dissipation channels, the new product achieves a 15% reduction in conductor cross-section while maintaining equal current-carrying capacity.

Competitive Edges



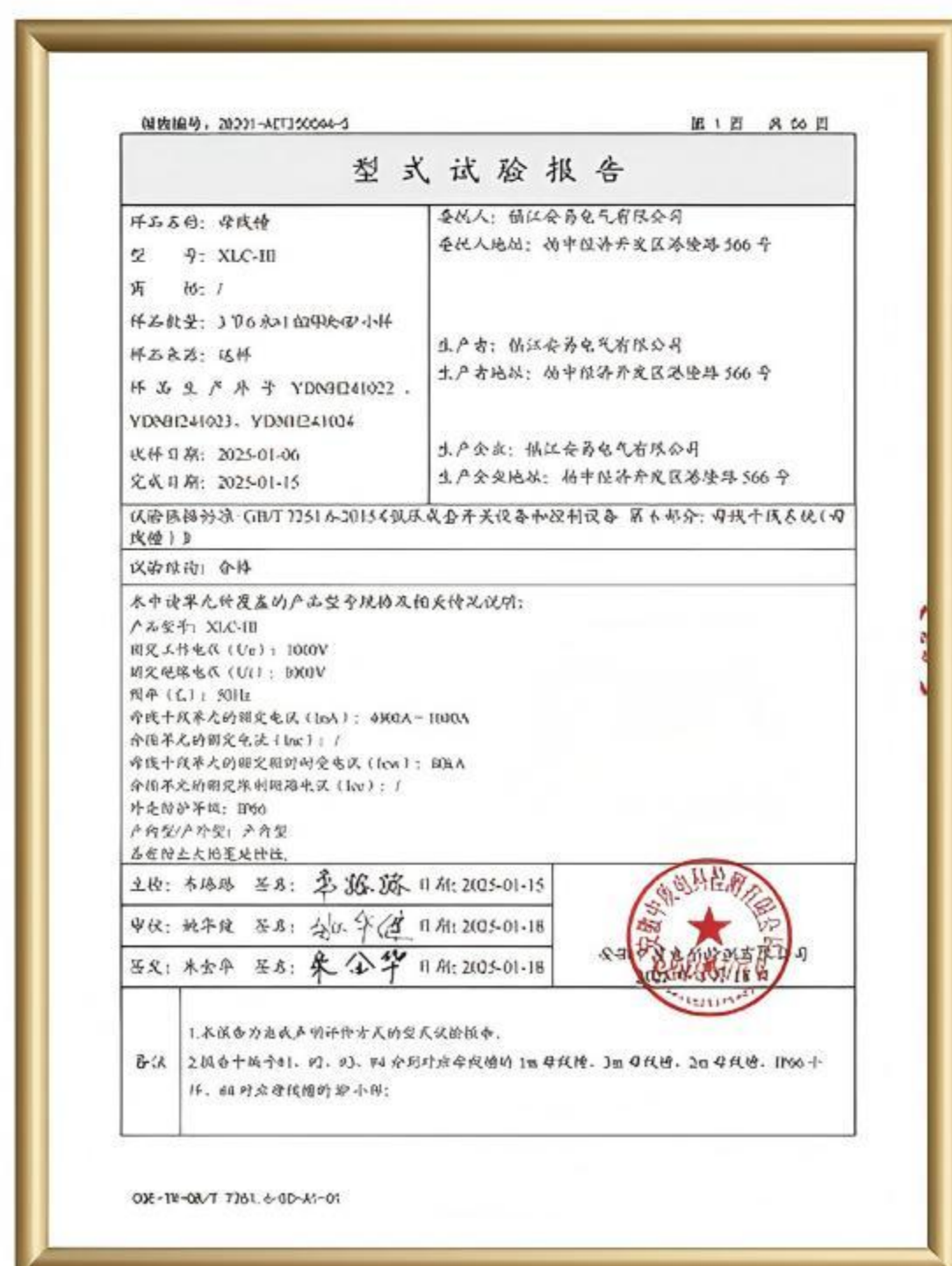
Direct cost reduction with significantly optimized material and installation expenses



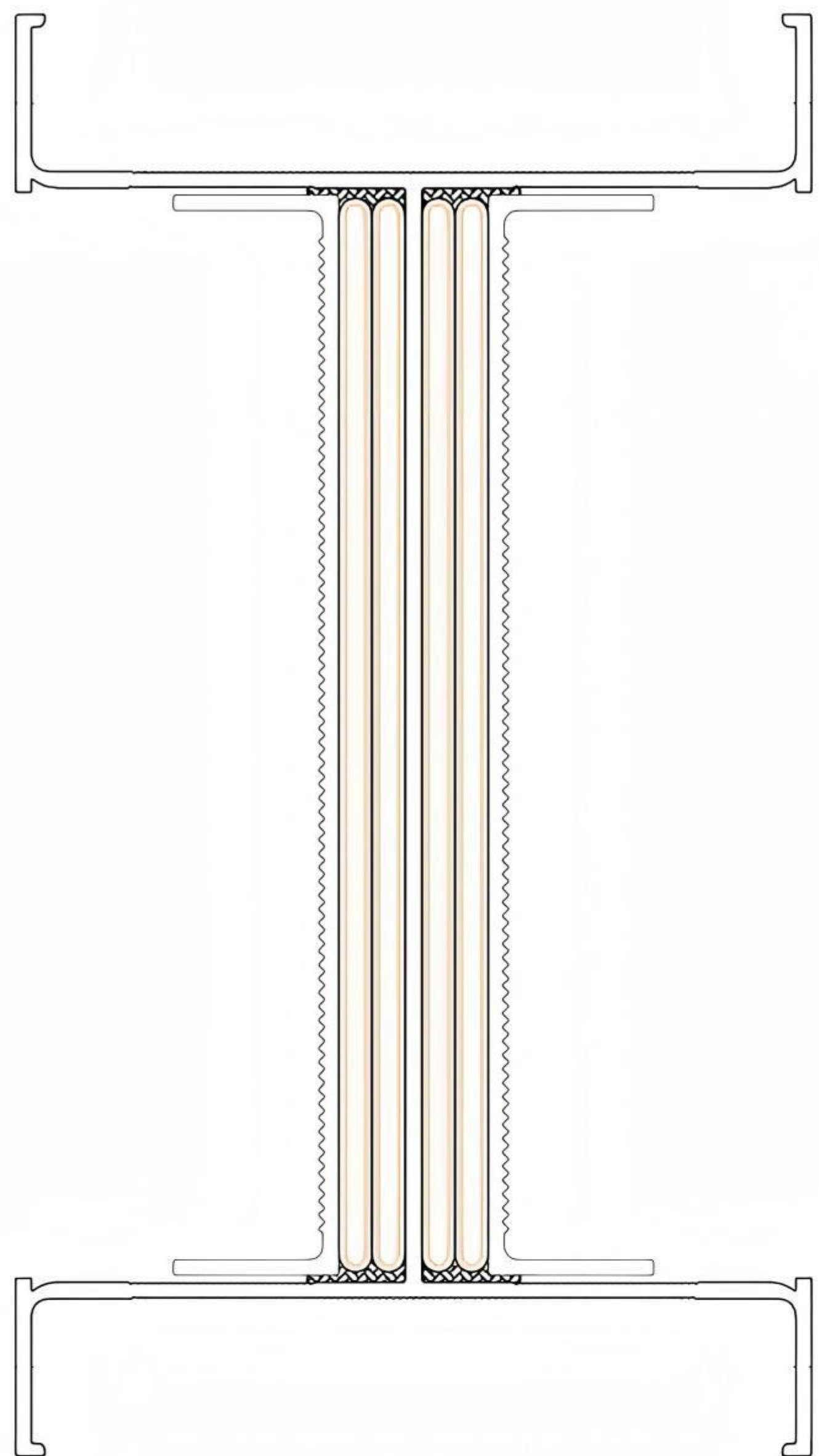
Space-saving design, ideal for height-restricted data centers, hotels, and industrial plants

Type Test Report

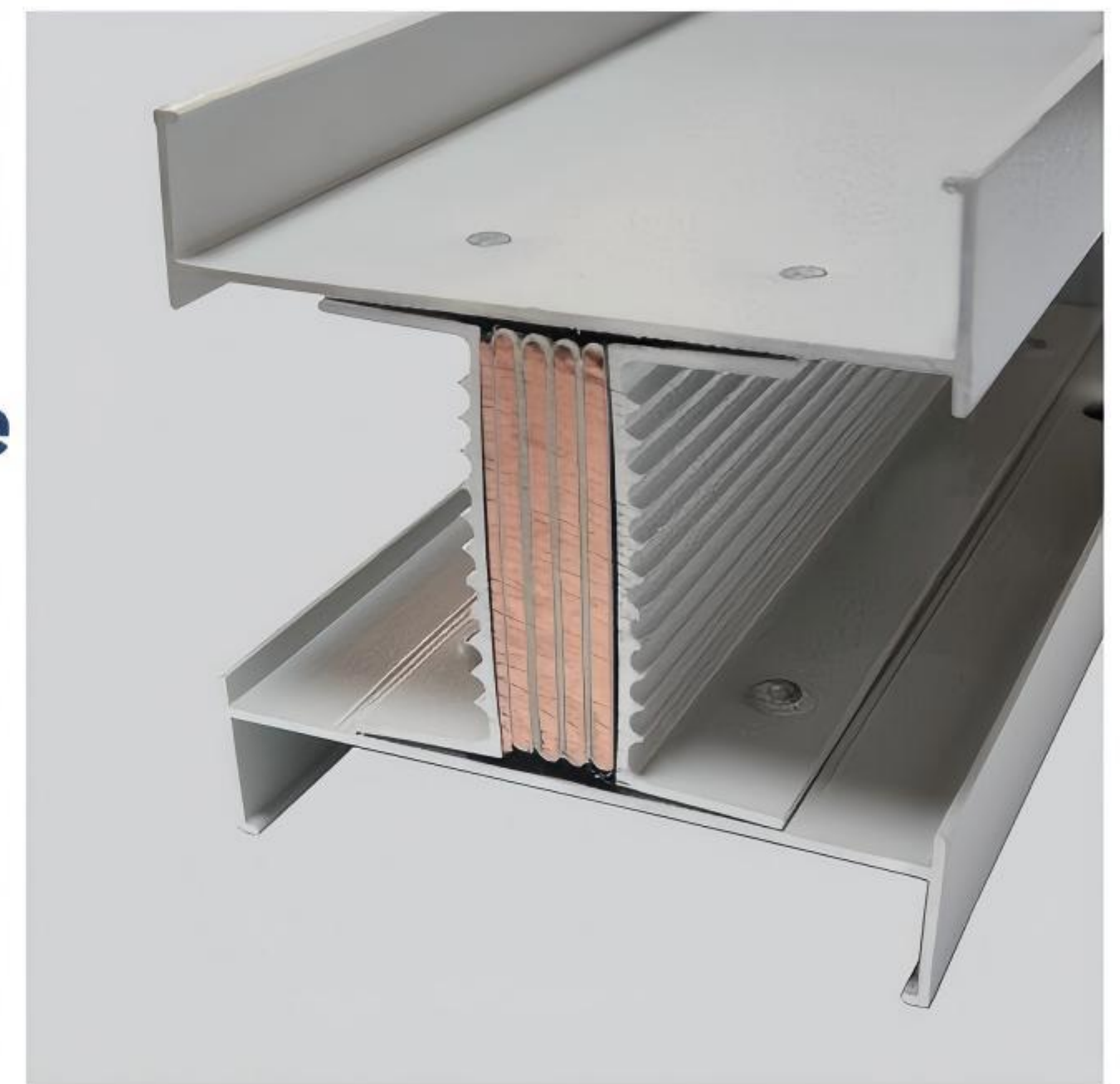
The product has passed type tests by authorized agencies, obtained CQC certification, and comes with complete test reports - guaranteeing full compliance with overload capacity and short-circuit withstand requirements.



Product Highlights

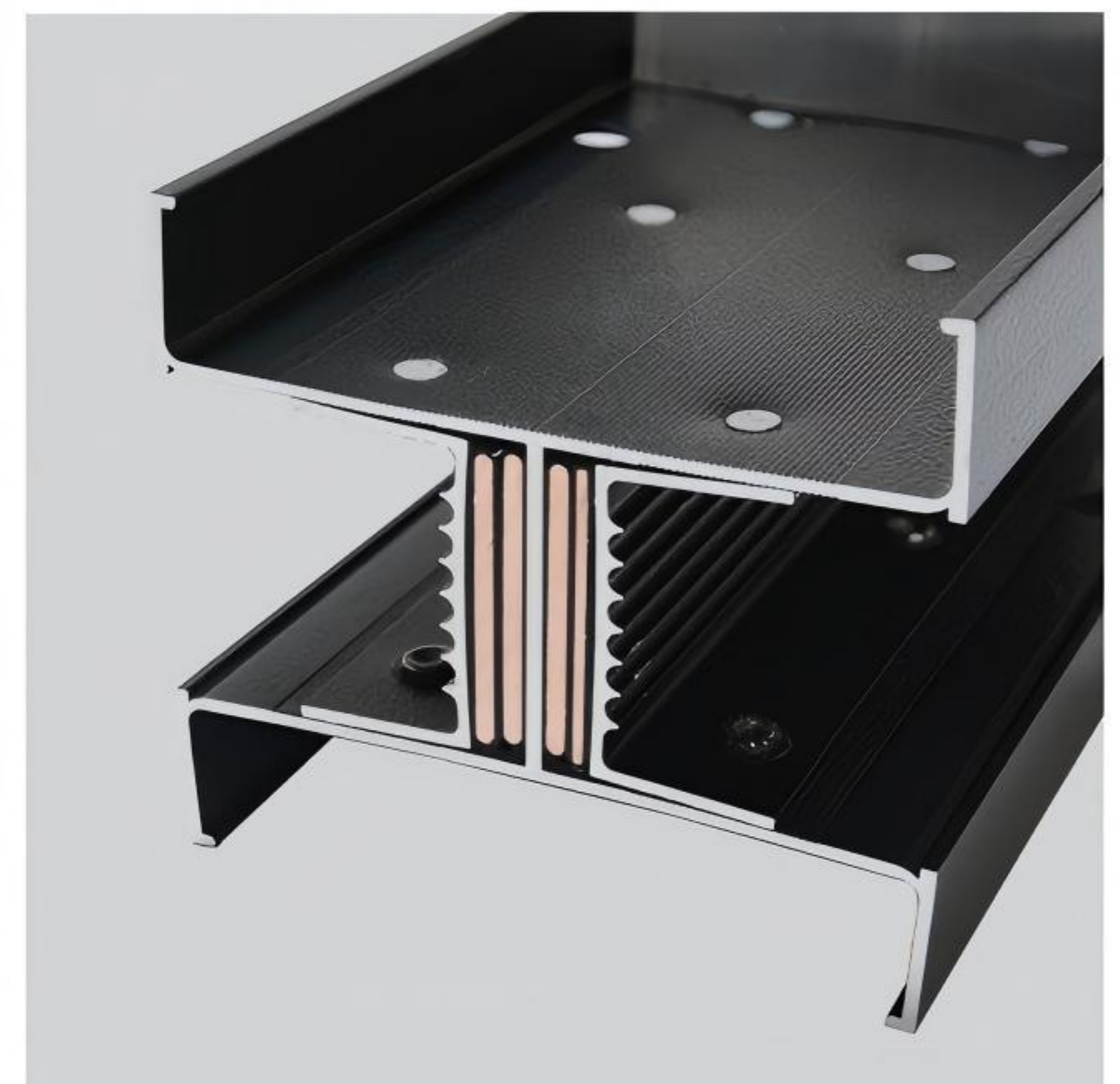


Legacy product structure



“H-shaped double-cavity configuration”

New product structure



01 Advanced Thermal Management

I-beam housing splits conductors for dual-side cooling, cutting operating temps vs single-chamber designs for stable high-load performance.



02 Optimized Cross-Section

Smaller cross-section with equal current: Breakthrough cooling enables thinner conductors, saving material without sacrificing conductivity.



03 Cost-Effective Solution

Cost-saving cascade: Optimized conductors → less material + compact size → ideal for tight spaces → lower production costs.

Tech-driven full-chain value upgrade: balancing **performance gains** with **commercial benefits**.



Company Profile

Established in 2014

Modern facility

3000 +sqm

Advanced equipment

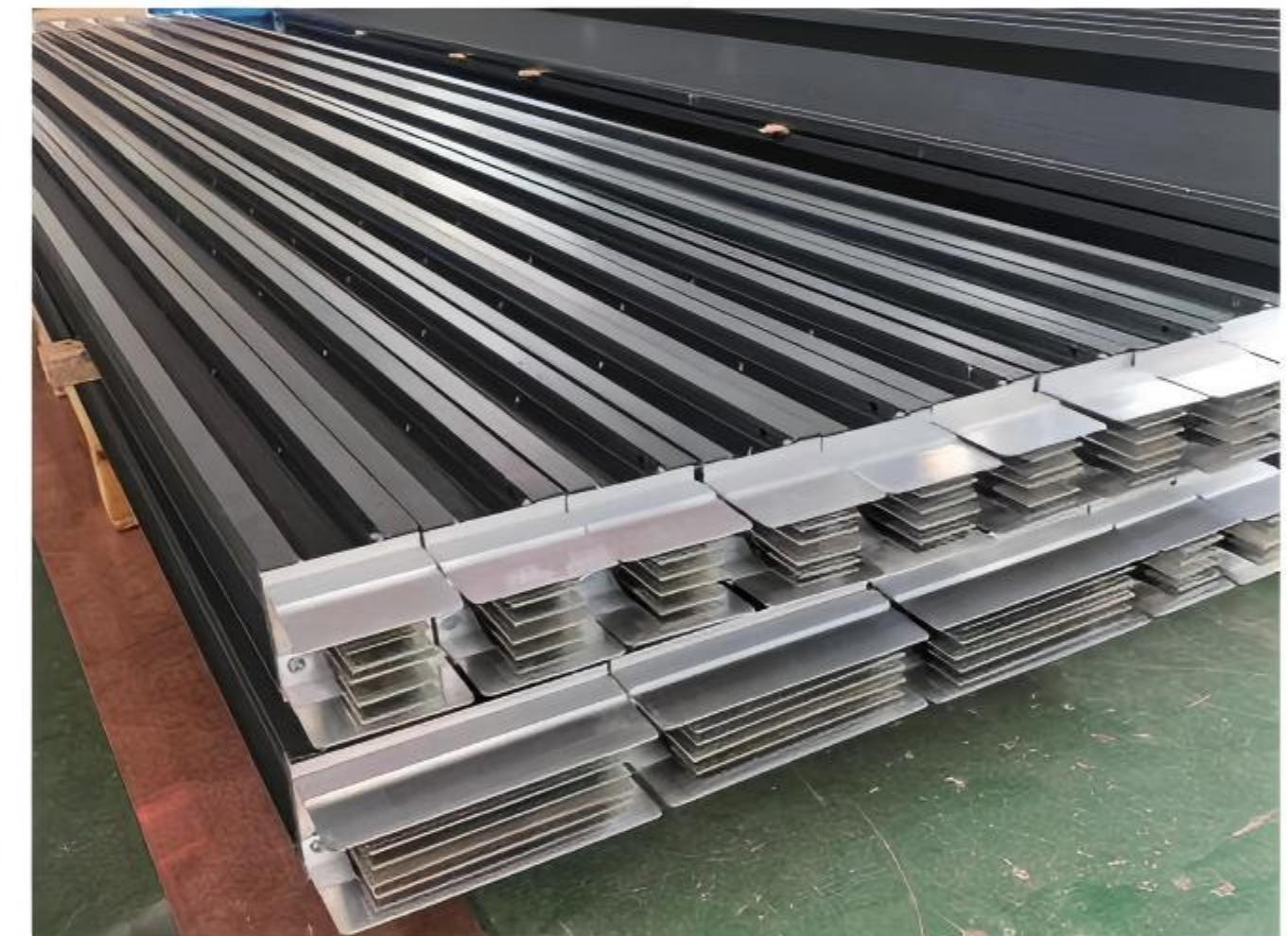
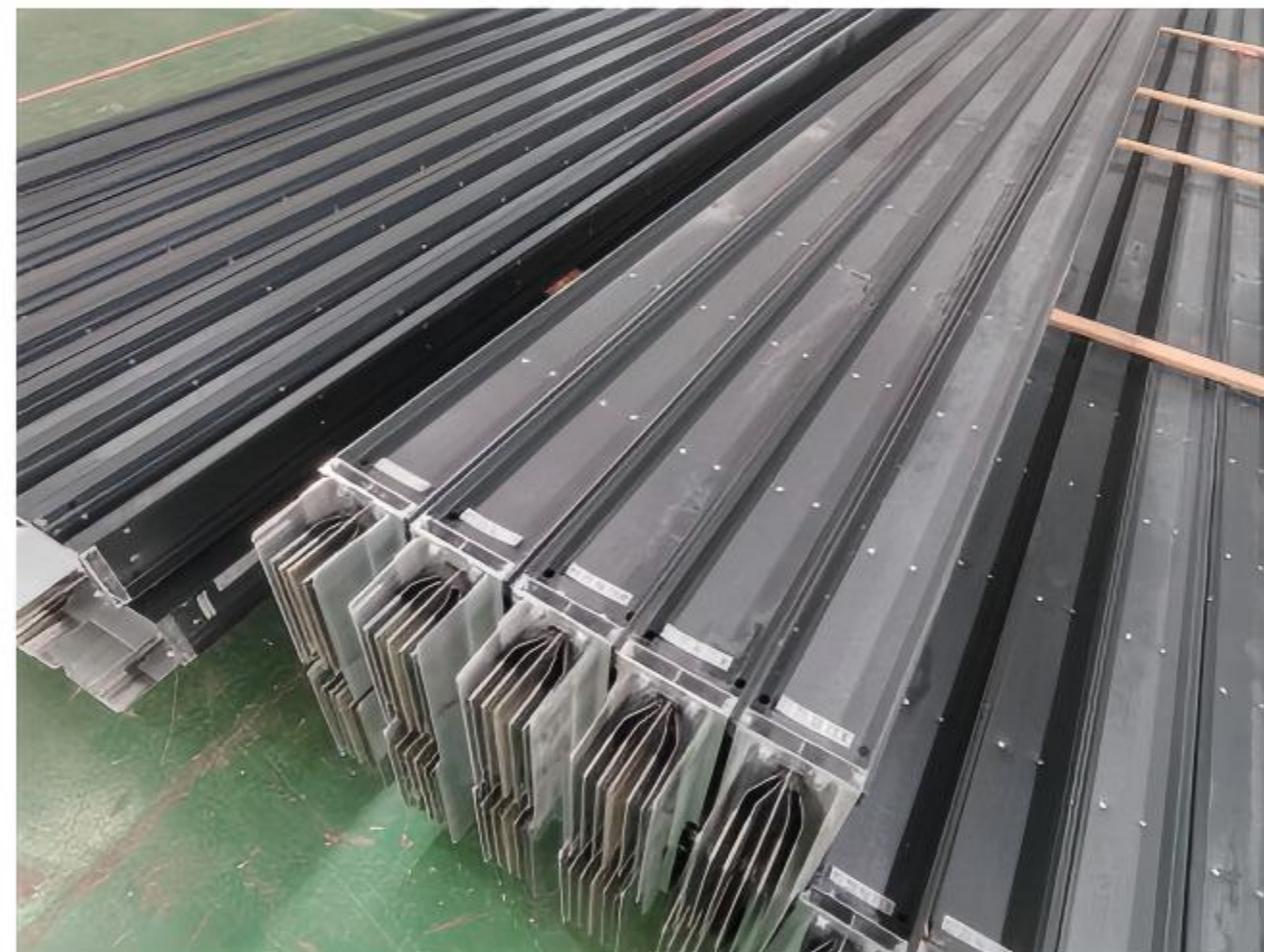
30 +units

Founded in 2014, Anyi Electric is a high-tech enterprise specializing in the R&D, production, and sales of busway systems. With solid technical expertise and steady growth, we have become a trusted industry partner.

Our 3,000+ sqm modern facility, equipped with 30+ advanced production units, ensures an efficient and flexible manufacturing system capable of fast response to diverse orders and reliable capacity support

Guided by innovation, we continuously optimize product performance, delivering full-scenario busway solutions with precision customization. We enforce strict quality control and service standards, implementing national regulations throughout production to guarantee safety and reliability, backed by rapid-response mechanisms and lifetime service commitments.

Moving forward, Anyi will uphold its philosophy of "Quality First, Innovation Driven, Service Excellence" to provide superior power transmission solutions with global partners.



Telephone: 0511-88126089

Email: 13952908665@126.com

Website: <http://www.anelec.cn>

Address: No.566,Ganglong Road,Economic Development Zone,Yangzhong City,Jiangsu Province